

IMPORTANT BIOSECURITY INFORMATION

Fruit fly has been detected in Tasmania.

It is a significant threat to the State but there is a chance to eradicate it NOW.

What you must do

- Do not move fruit fly host produce* outside the Control Area
Refer to map at www.dpipwe.tas.gov.au/fruitfly
- Inside the Control Area ensure all rotten or fallen fruit are double bagged prior to placing in general waste
- Obey road signs and use fruit disposal bins provided on key roads when leaving the Control Area
- Report all suspect produce to **Biosecurity Tasmania on 6165 3774**

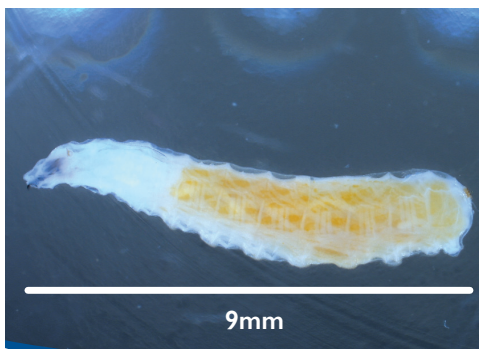
More information

For latest fruit fly information including a full list of host produce and maps of the Control Area visit www.dpipwe.tas.gov.au/fruitfly

* fruit fly host produce includes apples, apricots, bananas, blackberries, capsicum, cherries, figs, grapefruit, mulberries, nashis, nectarines, oranges, peaches, pears, plums, raspberries, strawberries and tomatoes.

How to identify fruit fly

Fruit fly larvae



Adult fruit fly



Larvae in fruit

