

BE A *Spirited* TRAVELLER

INFORMATION GUIDE



CONTENTS

TAKE YOUR VEHICLE	2
SAIL BY DAY	3
SAIL BY NIGHT	4
SAIL SAFE	5
ACCOMMODATION	6
FACILITIES & ENTERTAINMENT	7
DINING & BARS	8
GENERAL INFORMATION	9
GROUP TRAVEL	10
SPIRIT OF TASMANIA QUAY	11
NEW SHIPS	12
SHIP MAP	13





TAKE YOUR CAR ON THE ADVENTURE

Bringing your car along for the ride couldn't be easier: simply drive on and drive off into your Tassie adventure.

Enjoy all the safety and comfort of your own car, campervan or caravan, experience full flexibility throughout your journey, and the freedom of packing whatever you like. With no luggage restrictions, you can pack as much as your

vehicle can carry. Hiking gear, golf clubs, kayak: bring it all with you. But be sure to leave some room in the boot to bring home a taste of Tasmania's delicious produce.

[FIND OUT MORE](#)

SEE MORE WHEN YOU SAIL BY DAY

Spirit of Tasmania operates day sailings during summer and high demand periods (September - April), departing from each port. With no need to book accommodation and no seat allocation, you are free to wander at your leisure to experience all that a day sailing has to offer.

As the land give ways to the glistening sea, you can engage all of your senses on deck or take a seat and watch the world sail by.

Once you've embraced the fresh sea breeze, there's plenty more waiting for you on board with three decks to explore: enjoy a glass of one of Tassie's finest drops in one of three bars, catch a new release movie in one of

two cinemas, or linger over a long lunch.

With a Day Ticket you're free to explore every inch of the ship, and make the most of the open spaces available. For added relaxation, book a private cabin for a cheeky nap to recharge your batteries.

[FIND OUT MORE](#)



SAIL BY NIGHT AND WAKE READY FOR ADVENTURE

Sailing at night is an unforgettable experience: soak up the twinkling lights of the skyline, admire endless starry skies across Bass Strait, then wake up ready for your next adventure.

When you sail by night, your adventure starts the moment you drive on board. Your journey begins as you watch the lights of the skyline recede into the distance (perhaps with a glass of Tassie vino or craft beer in hand). Next, leave the cooking to us

with our selection of hot or cold favourites at Tasmanian Market Kitchen; our casual self-serve eatery. Then it's time for a movie before retiring to your cabin for a cosy night's sleep to dream of what awaits you in the morning.

[FIND OUT MORE](#)





SAIL *Safe*



Rest assured that when you sail with us your safety and comfort always comes first. We've implemented a number of wellbeing measures to help everyone stay healthy and safe while travelling.

HAND SANITISER

To help you maintain good personal hygiene, hand sanitiser is available for your use throughout our terminals and on board.

FREQUENT CLEANING

Throughout the journey our crew are regularly cleaning and sanitising high touch surfaces in common areas using 100% chemical-free, hospital grade disinfectant. Cabins and recliners are cleaned and sanitised after every sailing.

FACE MASKS

Face masks are not mandatory but we appreciate some passengers may wish to wear them.

MEDICAL ASSISTANCE

A Medical Attendant is on board and will work with our highly trained crew to implement procedures should you or another passenger become unwell on board.

CASHLESS PAYMENTS

Only cashless payments are accepted in our terminals and on board in the dining, bar and convenience outlets. We accept credit and debit card payments including all 'tap and go' methods such as Apple Pay.

ACCOMMODATION

The spirited traveller knows that putting their feet up and relaxing is an essential part of any getaway, and with 222 cabins and 121 recliners on board, there are accommodation options to suit all budgets.

DELUXE CABINS

Our Deluxe Cabins feature a queen-size bed, fridge, private ensuite, flat-screen TV and twin porthole windows with sea views.

TWIN & FOUR BED CABINS

Twin Bed Cabins are equipped with two single beds and Four Bed Cabins with bunk beds for up to four people, perfect for families or a group of friends. All cabins have private ensuite facilities with bedding and towels provided. Cabins are available with or without a porthole window.

RECLINERS

For those who prefer a great, low-cost alternative, our recliners are just the ticket. Located in a private lounge, they come equipped with individual reading lights, tray table, USB port and blankets and pillows during night sailings. And with floor-to-ceiling windows, you can sit back, relax and enjoy the view.

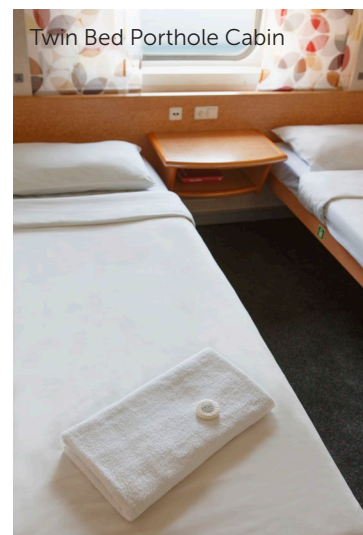
DAY TICKETS

There's no need to think about accommodation with a Day Ticket (only available on day sailings). And with no 'fasten your seat belt' signs on board – you're free to explore the indoor and outdoor areas to your heart's content.

[FIND OUT MORE](#)



Deluxe Cabin



Twin Bed Porthole Cabin



Four Bed Porthole Cabin



Recliner



FACILITIES & ENTERTAINMENT

CINEMAS

Catch the latest film releases in one of two cinemas. With multiple screenings per sailing you're sure to find a movie you'll enjoy.

[FIND OUT MORE](#)

TOURISM HUB

Our Tourism Hub offers passengers access to up-to-date information. Find maps, brochures and guidebooks showcasing a range of activities and experiences across Tasmania and Greater Geelong and The Bellarine. National Parks Passes for Tasmania can also be purchased here.

READING ROOM

If you need a bit of solitude, the Reading Room is a quiet space with comfortable chairs and no TVs.

KIDS PLAY AREA

A kids paradise, full of nooks and crannies begging to be explored. With seating available, you can sit and relax while keeping an eye on your little ones.

GAMING STATION

Challenge the kids to a game on the Xbox consoles. This space features comfortable seating and has a selection of games to choose from.

GAME ZONE

This fun arcade-style game area is the perfect retreat for teens with floor-to-ceiling windows and comfy lounges.

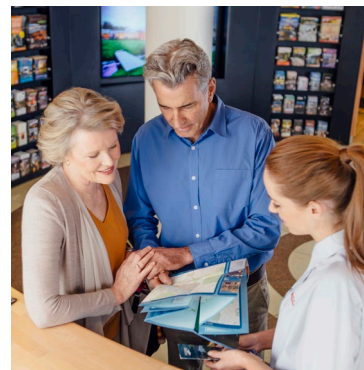
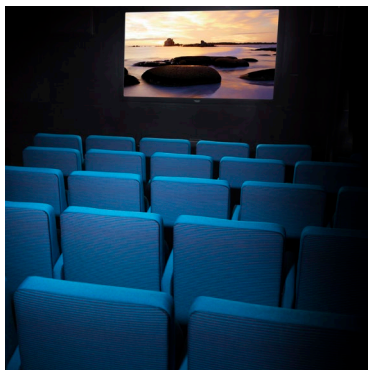
FREE MEDIA STREAMING

Once on board keep up to date with your favourite shows by streaming free-to-air TV on your very own device! Free media streaming is available in all public areas (excluding cabins). These areas include Deck 7, Deck 8 Recliners, Deck 9 and Deck 10.

STAY CONNECTED

Wi-Fi is available to purchase throughout the public areas (excluding cabins).

[FIND OUT MORE](#)



DINING & BARS

With a range of flexible dining options over three decks, we have all your cravings covered on board. Head to the upper decks to order pizzas and toasted Turkish rolls. Or sit back and enjoy delicious buffet style favourites at the restaurant. Those after something light, can pick up a snack from The Pantry.

TMK

When hunger strikes, head to TMK (Tasmanian Market Kitchen) on Deck 7. Our casual self-service eatery offers a selection of hot and cold favourites sure to satisfy your taste buds.

THE PANTRY

If you're after something light, The Pantry offers freshly prepared takeaway sandwiches, salads and snacks. You'll also find a range of specialty Tassie food products and souvenirs.

BAR 7

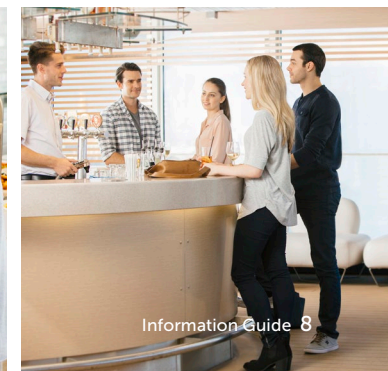
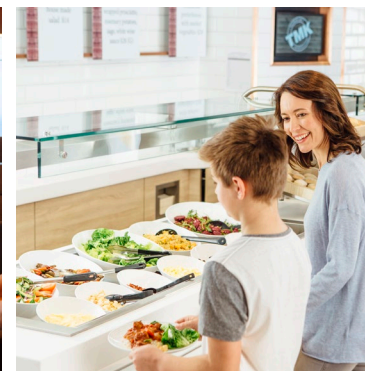
Bar 7 offers a selection of Tasmanian cool-climate wines, local craft beers and boutique ciders. With cosy chairs and flat-screen TVs, this is the perfect place to relax and unwind.

THE TERRACE LOUNGE BAR

The Terrace Lounge Bar on Deck 9 is bright and inviting with open spaces and colourful lounges. Enjoy the flat-screen TVs located throughout the deck. Bar snacks including pizzas and toasted Turkish rolls are also available.

TOP DECK LOUNGE

You'll feel like it's summer all year round at the Top Deck Lounge with an array of deck chairs and large surrounding glass windows offering unforgettable sea views. The Deck 10 bar is conveniently located near the Kids Play Area so while the little ones are busy exploring, parents can kick back with a relaxing drink.





GENERAL INFORMATION

OFF ON A CYCLING ADVENTURE?

Bring your own bike along.

[FIND OUT MORE](#)

SPECIFIC NEEDS & ASSISTANCE

If you have specific needs including accessibility requirements, let us know at the time of booking so we can ensure you enjoy a safe and comfortable journey.

[FIND OUT MORE](#)

GIFT VOUCHERS

Give the gift of travel with a Spirit of Tasmania gift voucher. They are available at set amounts between \$25 and \$1000.

[PURCHASE VOUCHER](#)

BRINGING YOUR PETS?

Furry members of the family can come along too. Dogs, cats, rabbits and even guinea pigs are all welcome. Our kennels are located on ventilated decks and fresh water is supplied throughout the sailing.

[FIND OUT MORE](#)

NO LUGGAGE RESTRICTIONS

With no weight restrictions, you are free to load up your vehicle with everything you need for your trip.

LOCKER STORAGE

Travelling without a vehicle? Self service locker storage is available in the terminals.

SAILING SCHEDULE

Spirit of Tasmania offers flexibility and convenience when travelling to and from Tasmania. The twin ships depart both ports (Geelong and Devonport) nightly and arrive the following morning.

Between September and April, Spirit of Tasmania operates day sailings

in addition to its regular schedule. These sailings depart each port in the morning and arrive at their destinations in the evening.

[SAILING SCHEDULE](#)

GROUP TRAVEL

Whether your group is travelling for sport, education, a family event or just for fun, our experienced team is here to help make the planning and booking process seamless for you.

GROUP BOOKINGS

If you are travelling in a group of 15 or more on the same sailing, you can look forward to a host of benefits, including special group fares, pre-paid dining options, deferred payments and a dedicated booking service for your group. Enjoy one free of charge passenger for every 10 paying passengers booked as part of a group booking. Group bookings are ideal for:

SPORTING GROUPS

There is no need to worry about excess baggage, simply pack it all into your own cars, minibus or touring coach.

HOLIDAYS

Special family occasions are the perfect opportunity to reconnect with loved ones – sail together and create memories that last a lifetime.

EDUCATIONAL GROUPS

Make your student excursion memorable with a journey by sea. There is no need to split your group across multiple travel dates or times, we can take them all on the one sailing!

[FIND OUT MORE](#)

SPECIAL EVENT BOOKINGS

If you are organising a conference, a car club tour, or any other group activity where your participants would prefer to travel across a range of dates pre and post the event, then speak to our team about creating a Special Event booking. A Special Event booking makes it easy for your participants, family and friends to choose dates that are convenient to them while still accessing a Special Event fare.

[ENQUIRE NOW](#)



INTRODUCING SPIRIT OF TASMANIA QUAY

Spirit of Tasmania's brand new Geelong terminal.

The brand-new, purpose-designed Spirit of Tasmania Quay terminal is fitted with cutting-edge technology and exceptional facilities for an enhanced travel experience. With easy access and ample parking, undercover areas

for vehicles, seamless boarding and security processes, and comfortable passenger lounge areas with a café and children's play area, our new Geelong terminal will make your next journey truly unforgettable.

[FIND OUT MORE](#)



The image shows two large ferries from the Spirit of Tasmania fleet sailing on a vast blue ocean under a clear sky. The ferry in the foreground is viewed from a low angle, showing its red hull, white superstructure, and a helicopter landing pad on the deck. The text 'SPIRIT OF TASMANIA' is visible on its side. A second ferry is visible in the distance, also bearing the same name. The overall scene is bright and clear, suggesting a sunny day.

NEW SHIPS

A new era is set to begin for Spirit of Tasmania, with two new purpose built ships – Spirit of Tasmania IV and Spirit of Tasmania V.

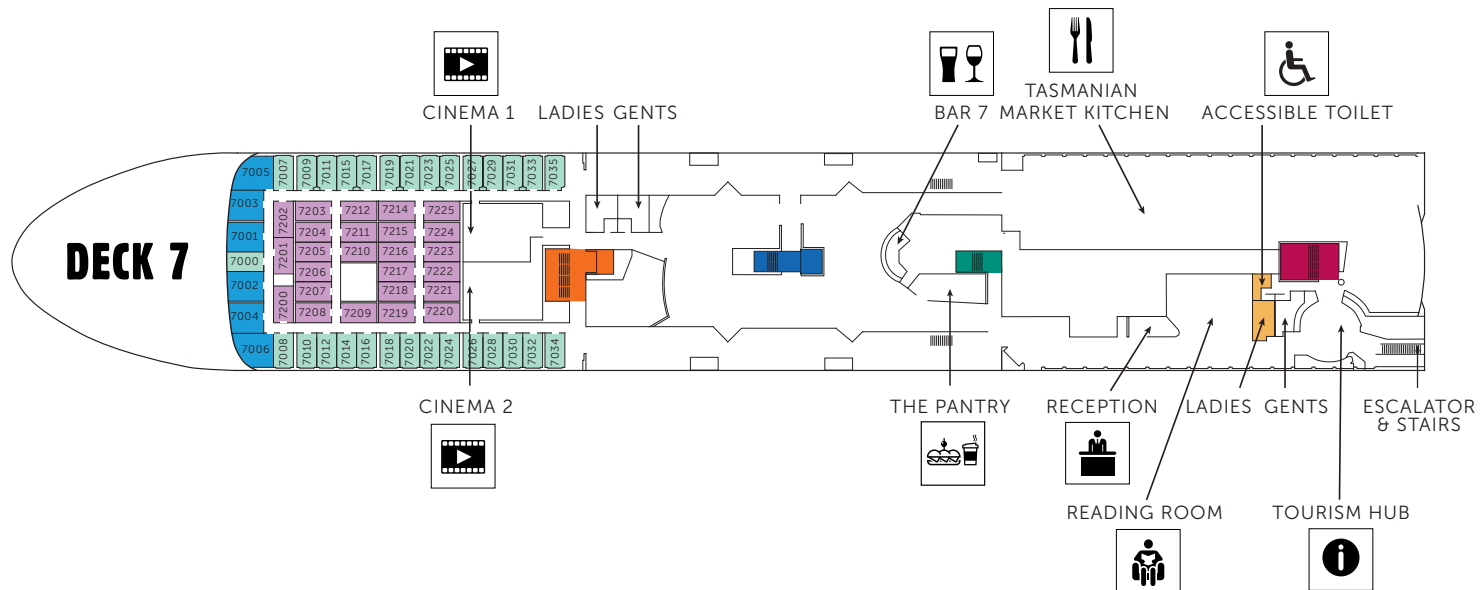
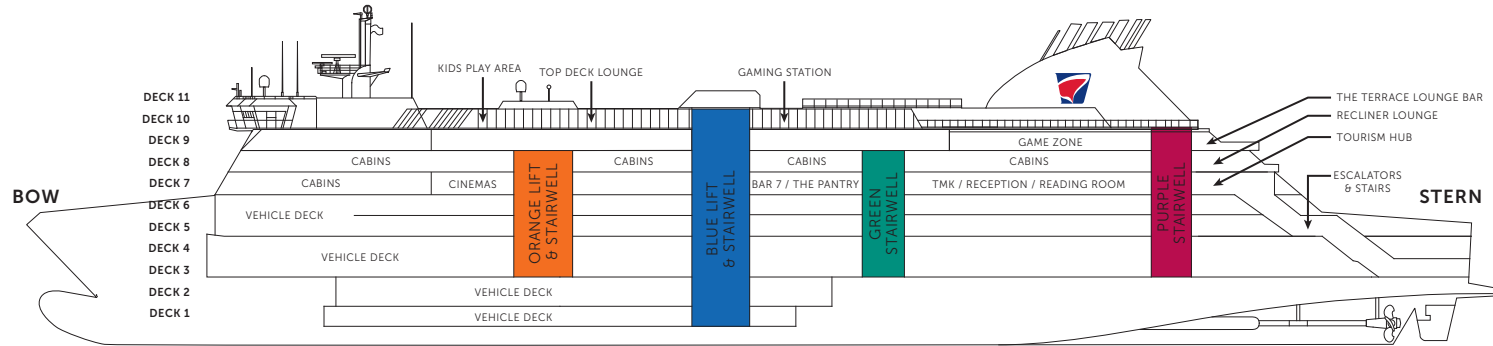
With innovative interiors, superb facilities, timeless design and increased capacity for passenger and freight vehicles, these stunning new environmentally efficient ships will ensure a relaxing and memorable sea experience for passengers.

Measuring over 212 metres, each ship has capacity for up to 1,800 passengers. Boasting 301 cabins, each ship includes deluxe cabins, family suites, porthole and inside cabins, accessible cabins with interconnecting options available, and business recliners.

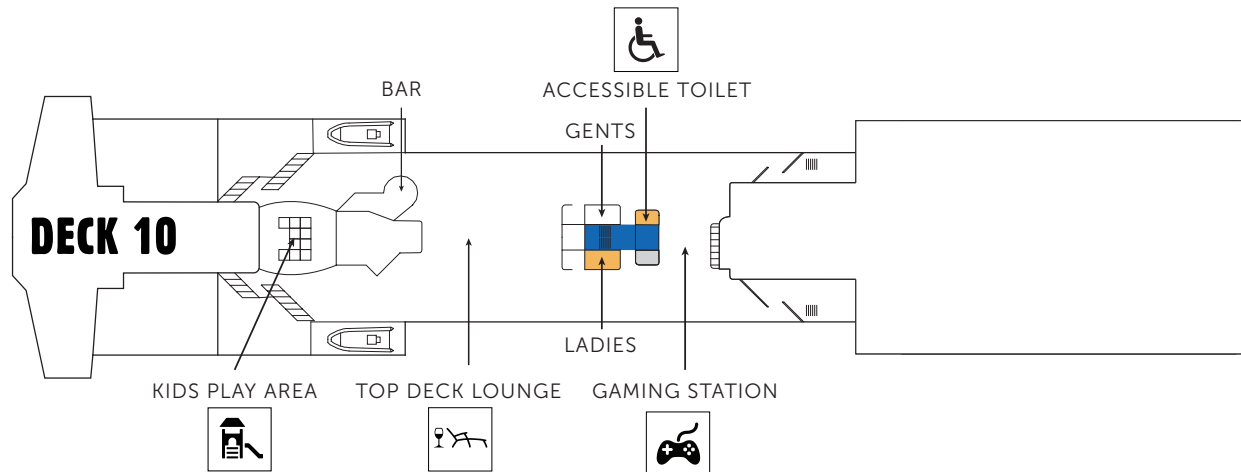
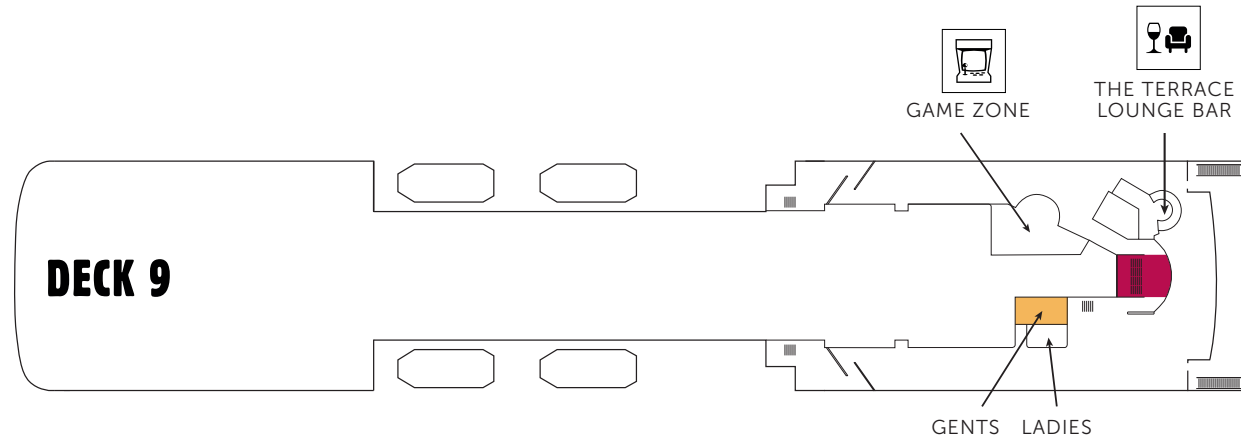
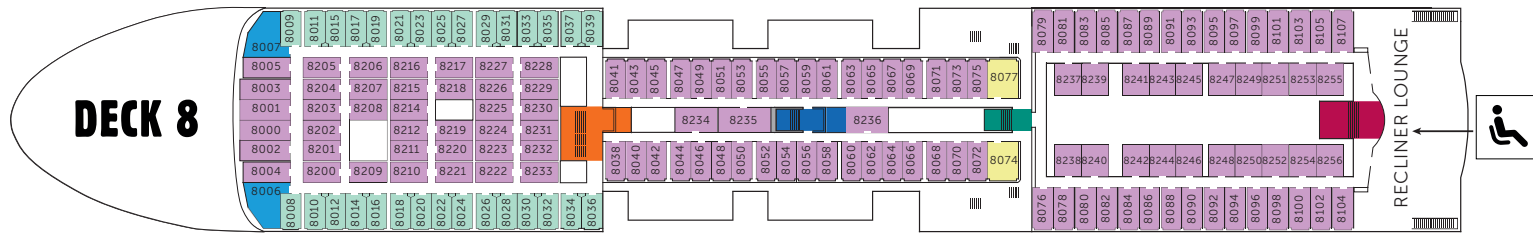
[FIND OUT MORE](#)

SHIP MAP

- DELUXE CABINS
- TWIN BED CABINS
- FOUR BED CABINS
- WHEELCHAIR ACCESSIBLE CABINS
- BABY CHANGE FACILITY
- ORANGE LIFT & STAIRWELL
- BLUE LIFT & STAIRWELL
- GREEN STAIRWELL
- PURPLE STAIRWELL



- DELUXE CABINS
- TWIN BED CABINS
- FOUR BED CABINS
- WHEELCHAIR ACCESSIBLE CABINS
- BABY CHANGE FACILITY
- ORANGE LIFT & STAIRWELL
- BLUE LIFT & STAIRWELL
- GREEN STAIRWELL
- PURPLE STAIRWELL





STAY IN THE LOOP

Sign up to our newsletter for our latest news, special offers, travel tips and inspiration.

[SIGN UP](#)

CONNECT WITH US



#spiritoftasmania #spiritedtraveller

📍 TASMANIAN TERMINAL

Esplanade, East Devonport

📍 VICTORIAN TERMINAL

Spirit of Tasmania Quay
136 Corio Quay Road, North Geelong

13 20 10

spiritoftasmania.com.au

[BACK TO START](#)